

# STUDENT UNION

## CREATING A CONNECTION BETWEEN BUILDING PROFESSIONALS AND STUDENTS WITH POTENTIAL

These projects are exhibitions from a recent design competition between architecture universities in Jordan. The competition included projects that reflected diversity in both programme and visual style.

*MEA* is the first publication to unveil these projects to the professional community and offer insights into each designer's vision. These four samples are parts of the respective students' final graduation project.

In 2009, the competition will include designs from the entire Middle East/ North Africa region, but *MEA* brings you a taste of the quality and level of sophistication that is already happening in the region's architecture universities.

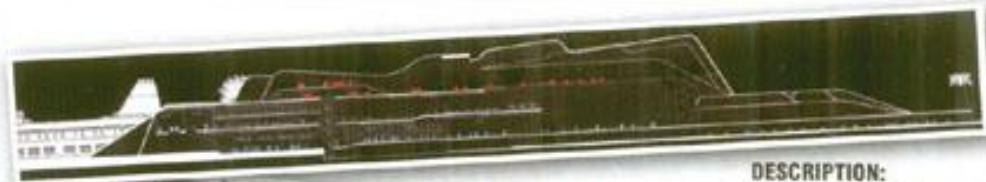


### DESCRIPTION:

This project is located in Dahrán, KSA. The project creates a cultural center for Aramco, a Saudi Arabian Oil Company. Deriving from the company's operations, the building reflects an organic feel that resembles the nature of oil and the force it creates to run our modern machinery.

**STUDENT:** Atallah Othman

**UNIVERSITY:** Al-Israa Private University



### DESCRIPTION:

Located in the Jordanian coastal city of Aqaba, the project caters to users moving between terrestrial and naval contexts. The project defines a terminal that is both an indoor and outdoor museum. The form of the building resembles the ships docked in port, and creates a silhouette that fits in the chains of hills in the background.

**STUDENT:** Dima Abu-Arifa

**UNIVERSITY:** Jordan University of Science & Technology

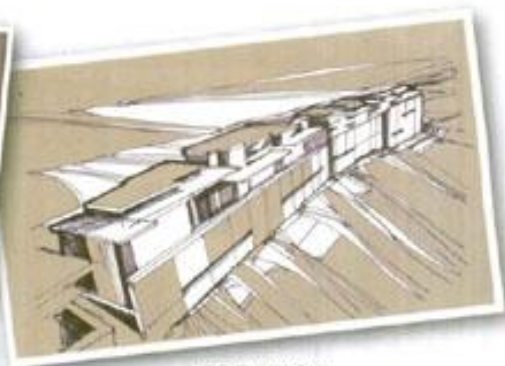




site  
PERSPECTIVEART  
SCHOOL**DESCRIPTION:**

This project is an urban infill in a traditional Ammani residential neighbourhood which has, historically, housed art and cultural venues. An extension for the newly created art scene, this school complements and adds new layers of activities to the neighbourhood.

**STUDENT:** Darya Tarawneh  
**UNIVERSITY:** Jordan University  
of Science & Technology

**DESCRIPTION:**

This project is located in the heart of Old Amman on the elevated Southern Terrace of the Hilly Citadel area (Jabal al-Qala') amongst the Roman/Islamic ruins. This area comprises modest cubic houses, typically painted in earth tones. The community rehabilitation center retains some of these structures and derives its design vocabulary from them. The center, in addition to serving its local community, houses an archeological museum.

**STUDENTS:**

Dina Hadi, Hazim Samawi & Mousa Shahin  
**UNIVERSITY:** University of Jordan

